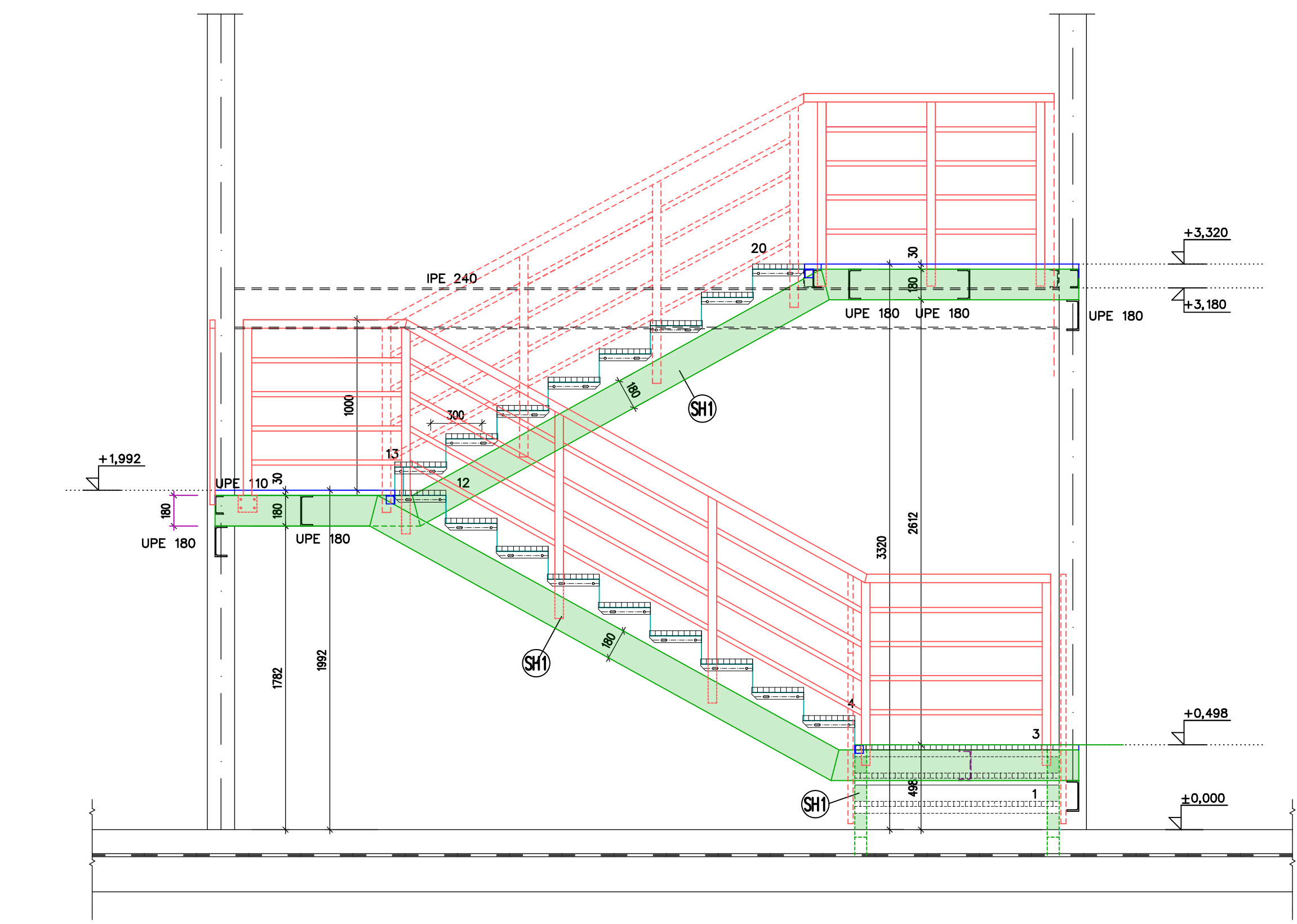
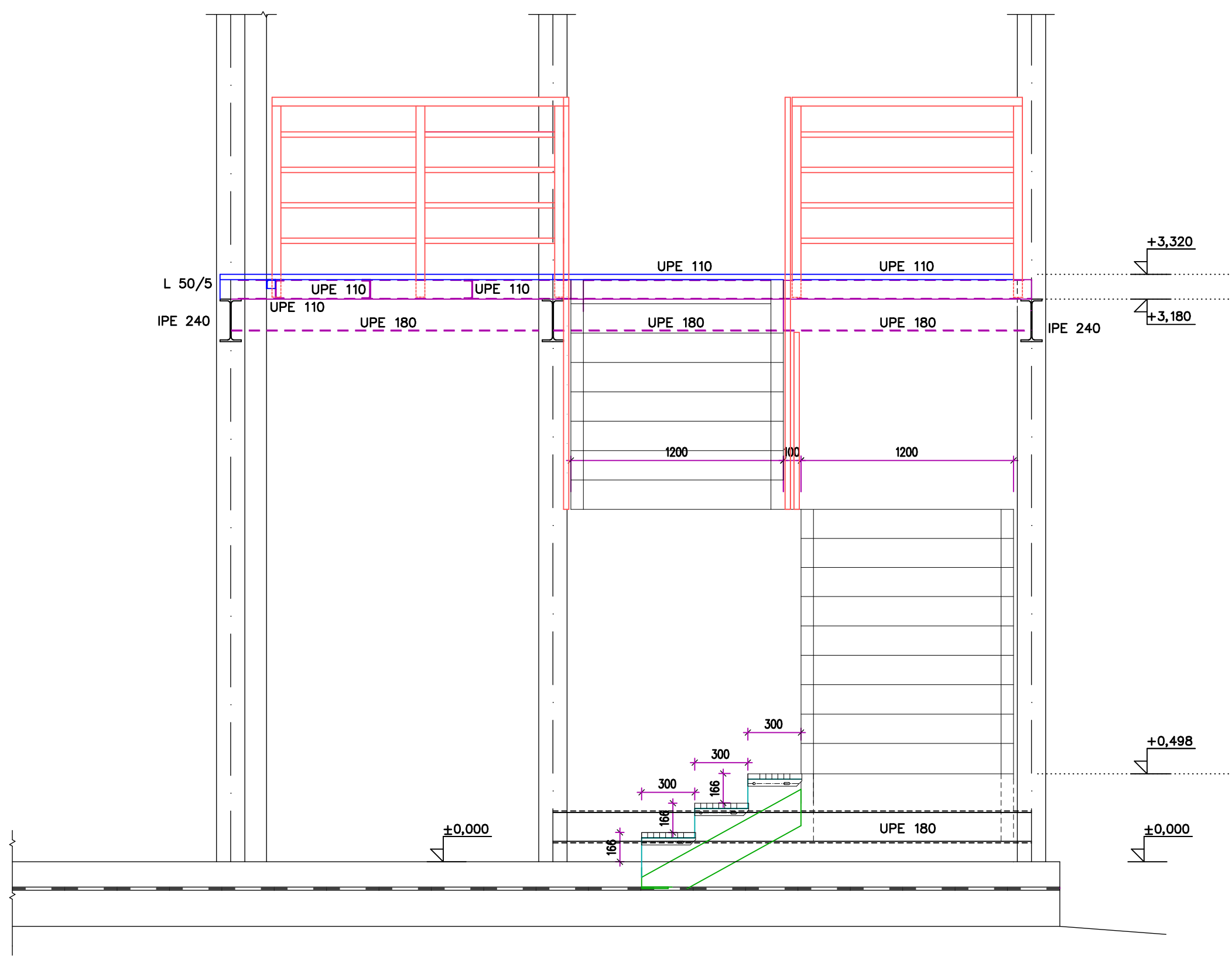


ŘEZ 1-1, 2-2

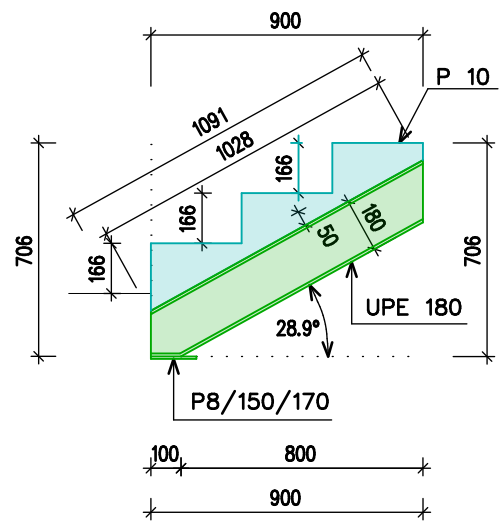


ŘEZ 3-3 (ŘEZ PODESTOU 2.N.P.)



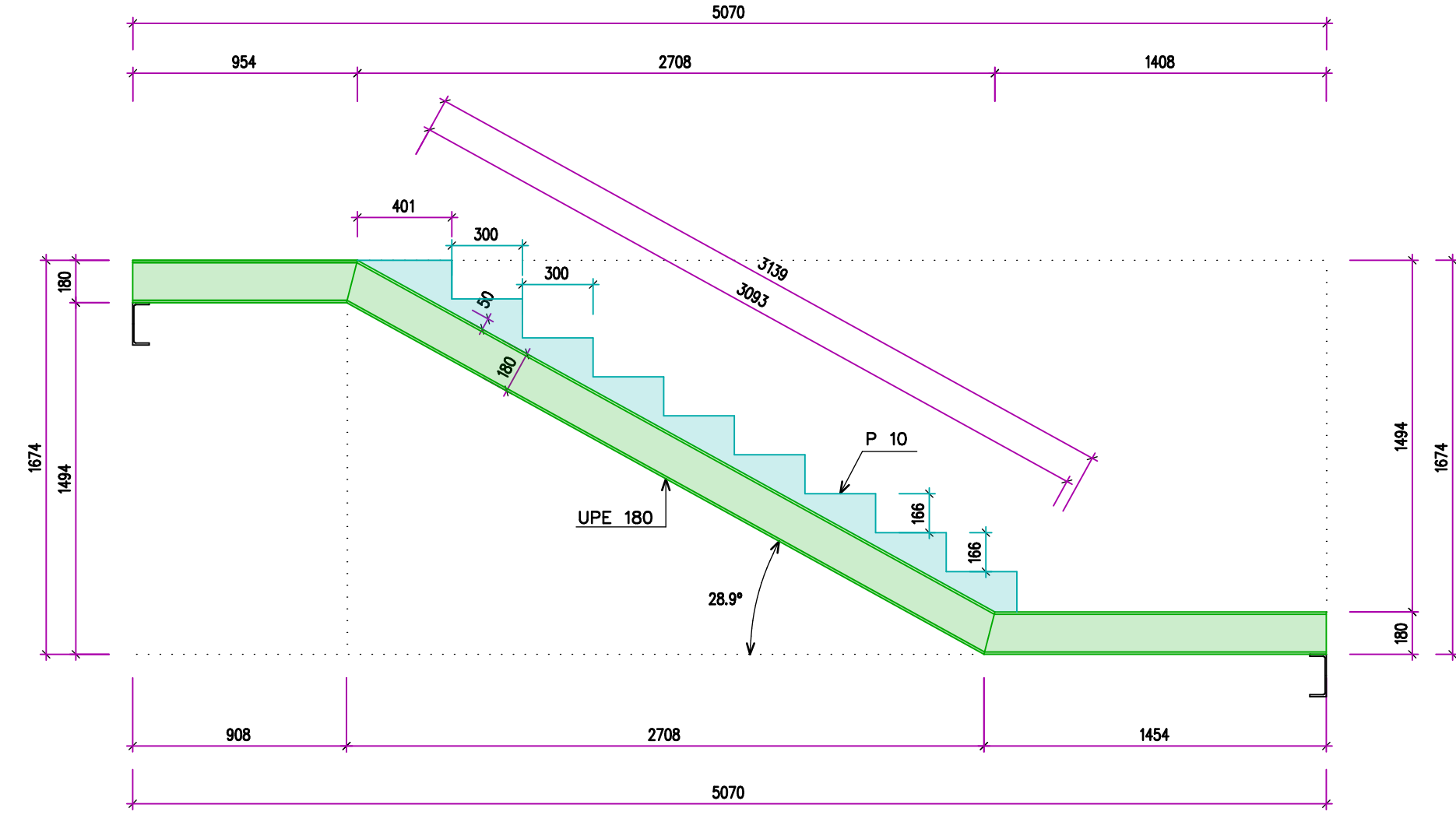
SCHODNICE 311  
- nástupní rameno

311 UPE 180 – cel. délka = 1091 mm  
P10 – plocha = 0,13 m²  
1x LEVA  
1x PRAVA



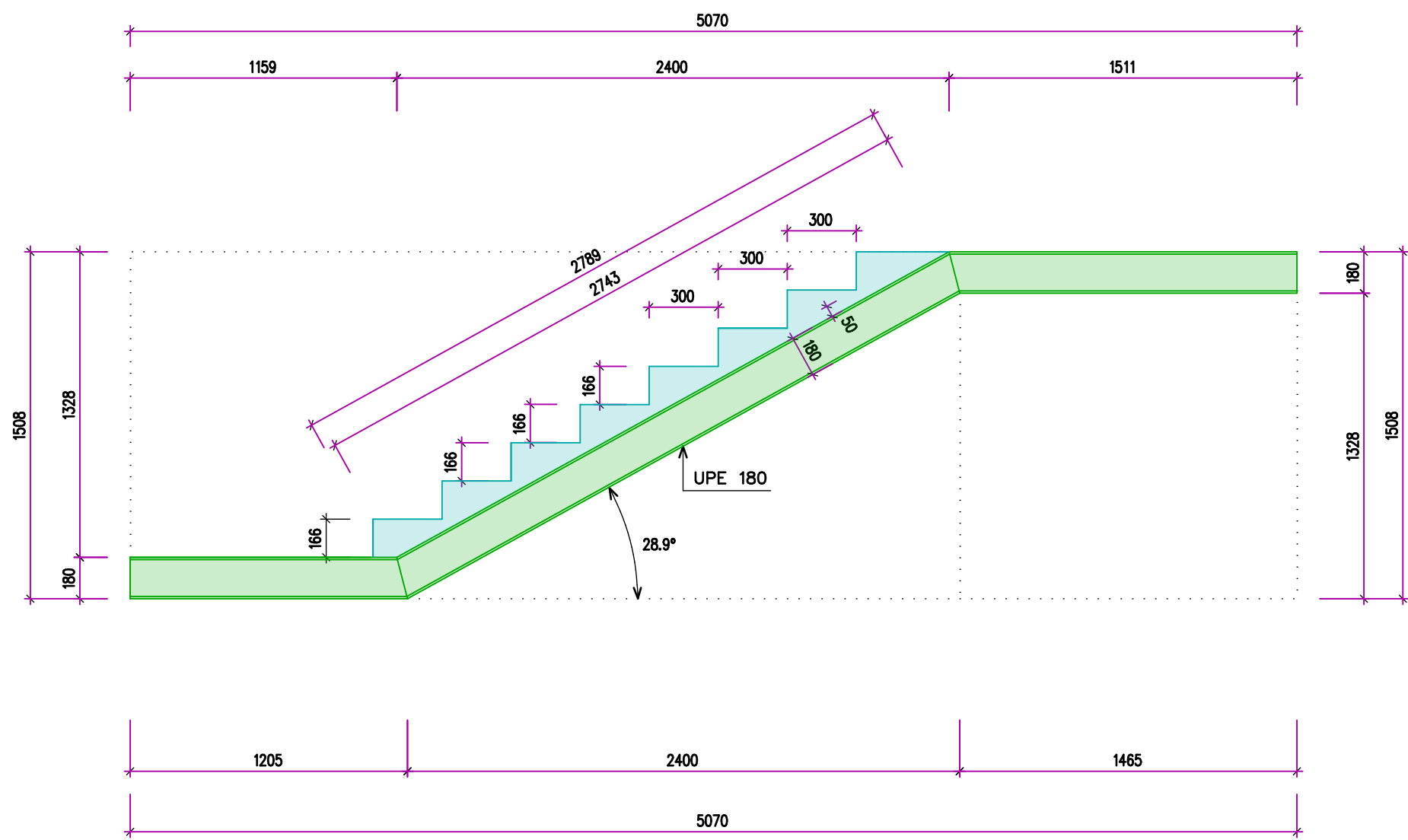
SCHODNICE 312  
- rameno 1

312 UPE 180 – cel. délka = 5547 mm  
P10 – plocha = 0,39 m²  
1x LEV  
1x PRAVÁ



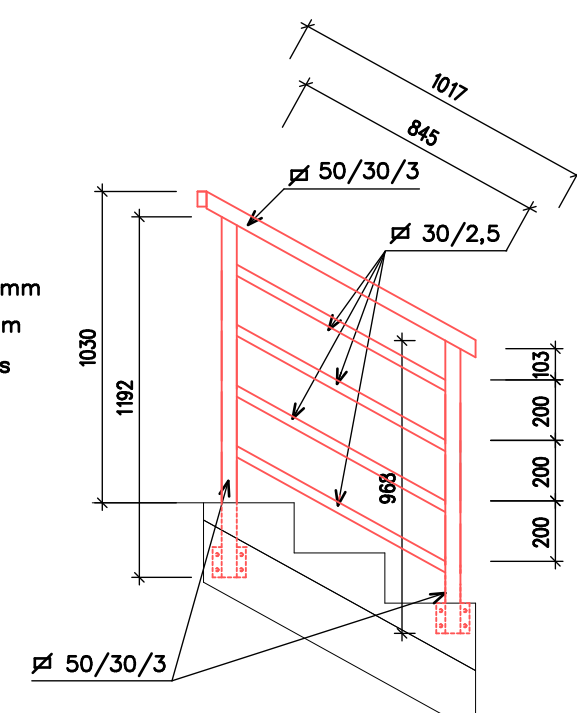
SCHODNICE 313  
výstupní rameno

313 UPE 180 – cel. délka = 5505 mm  
P10 – plocha = 0,34 m²  
1x LEVÁ  
1x PRAVÁ



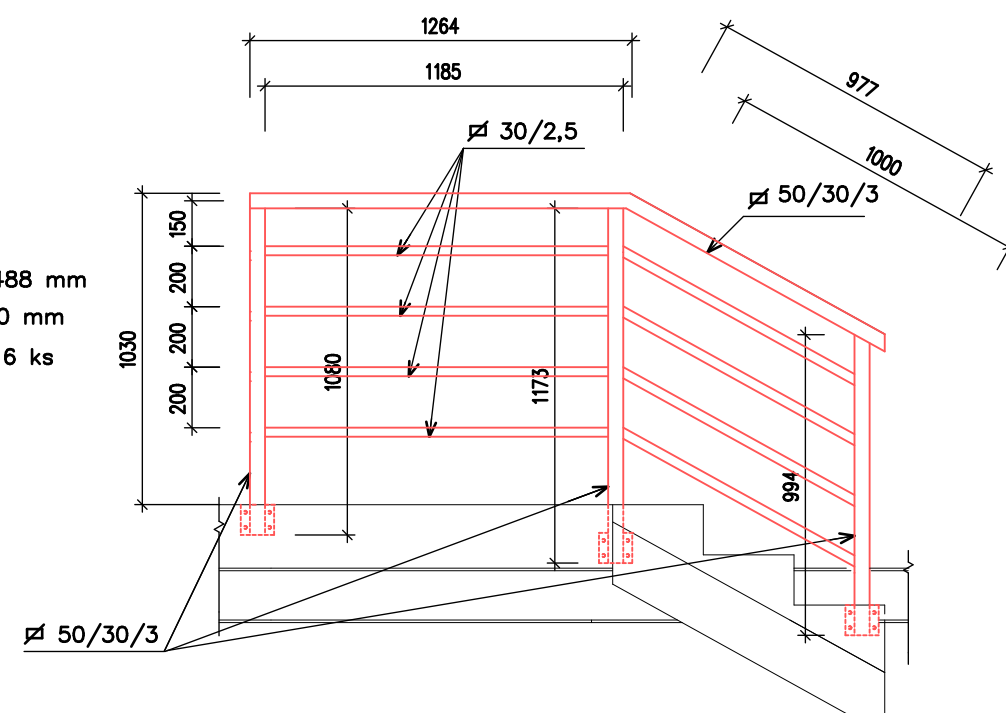
POHLED 21

šř 50/30/3 – 3177 mm  
šř 30/2,5 – 4068 mm  
P5/30/100 – 4 ks  
1x LEVÉ



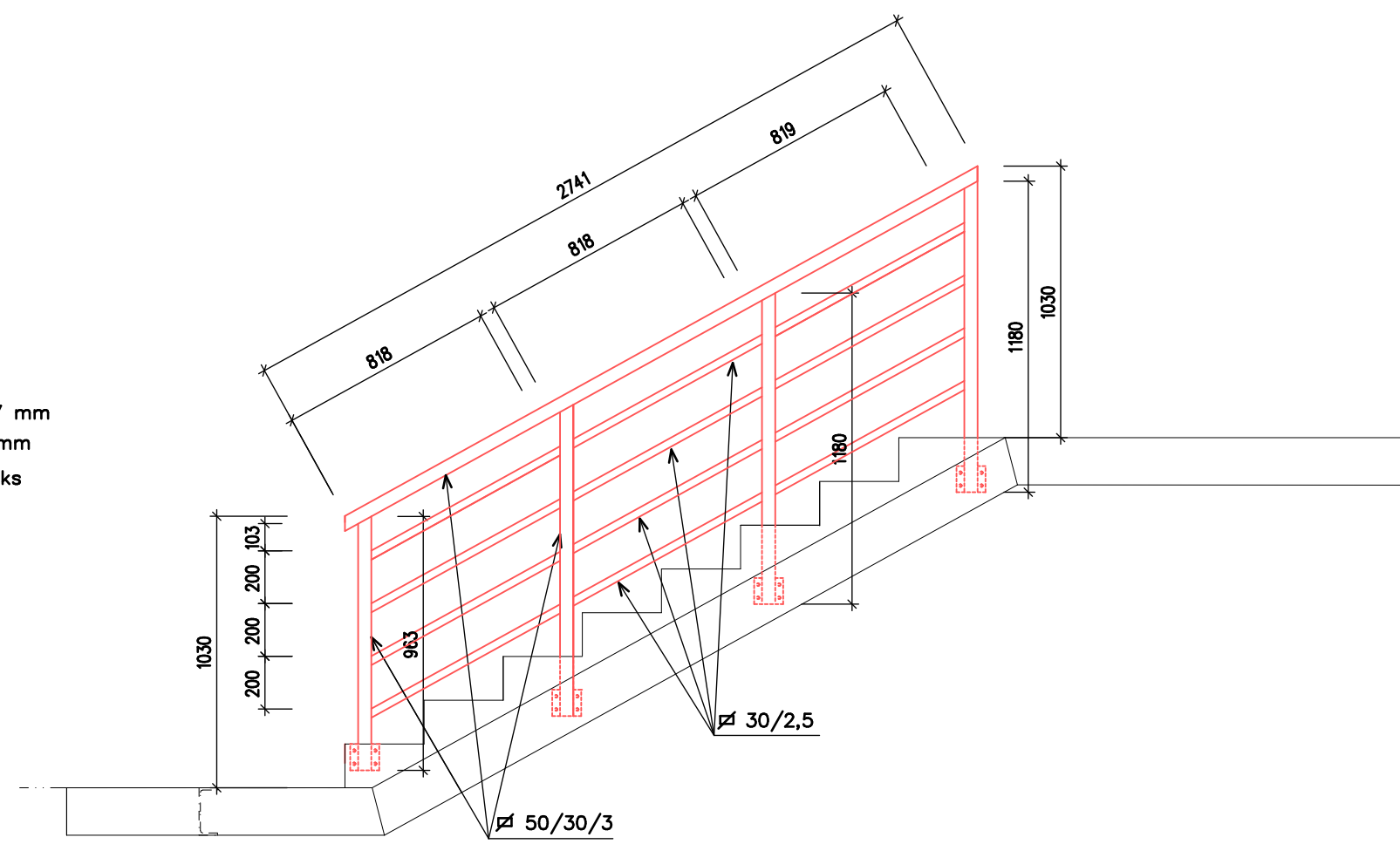
POHLED 22

šř 50/30/3 – 5488 mm  
šř 30/2,5 – 8740 mm  
P5/30/100 – 6 ks  
1x LEVÉ



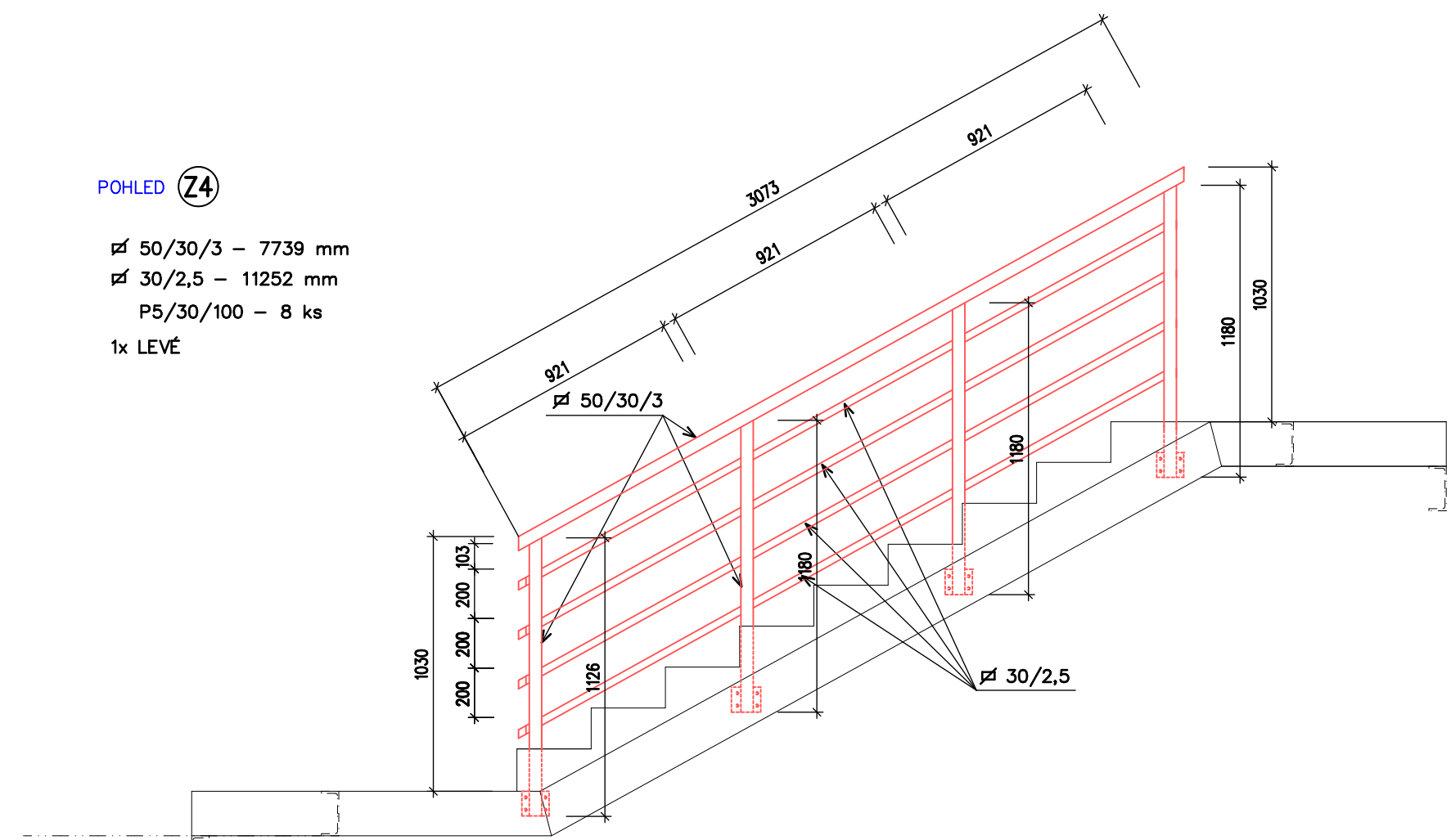
POHLED 27

šř 50/30/3 – 7247 mm  
šř 30/2,5 – 9820 mm  
P5/30/100 – 8 ks  
1x LEVÉ



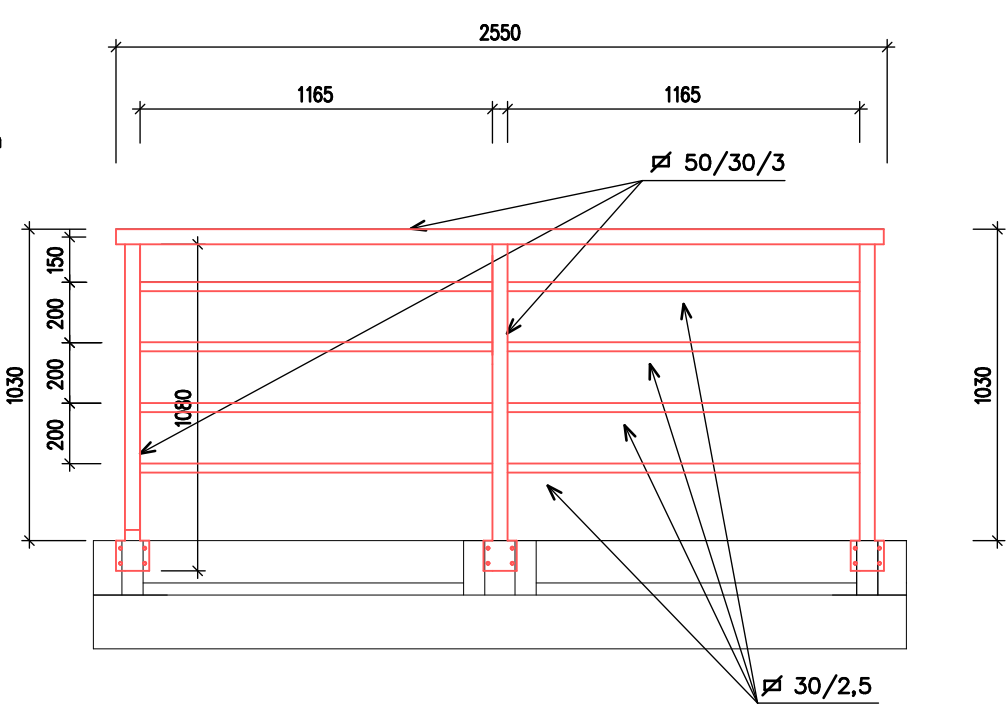
POHLED 24

šř 50/30/3 – 7739 mm  
šř 30/2,5 – 1252 mm  
P5/30/100 – 8 ks  
1x LEVÉ



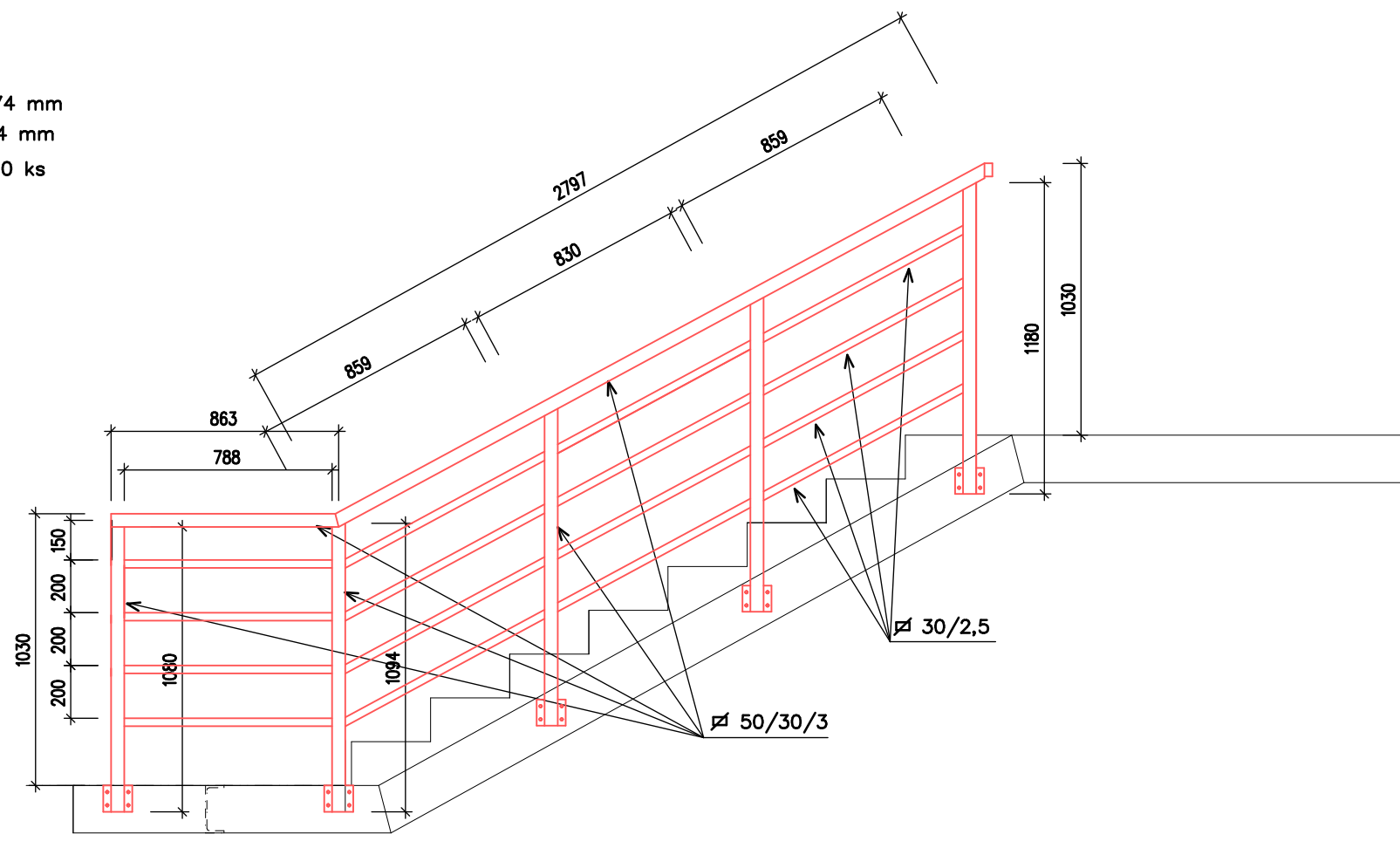
POHLED 25

šř 50/30/3 – 5790 mm  
šř 30/2,5 – 9320 mm  
P5/30/100 – 6 ks



POHLED 26

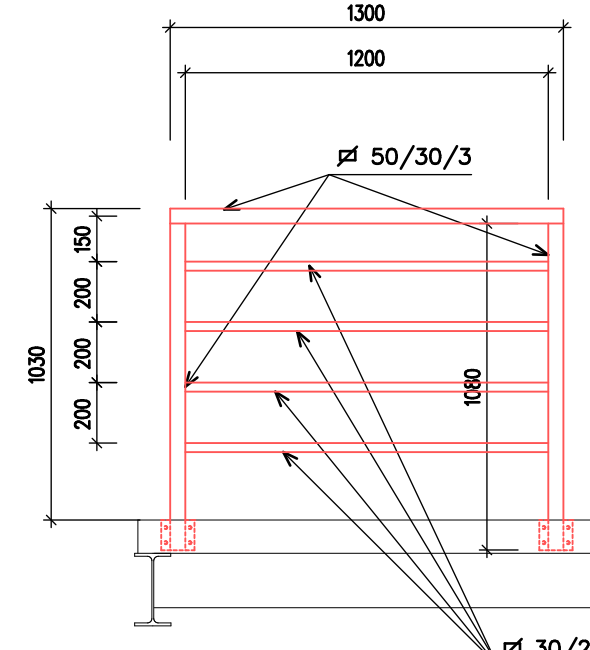
šř 50/30/3 – 9374 mm  
šř 30/2,5 – 13344 mm  
P5/30/100 – 10 ks  
1x PRAVÉ



50/30/3

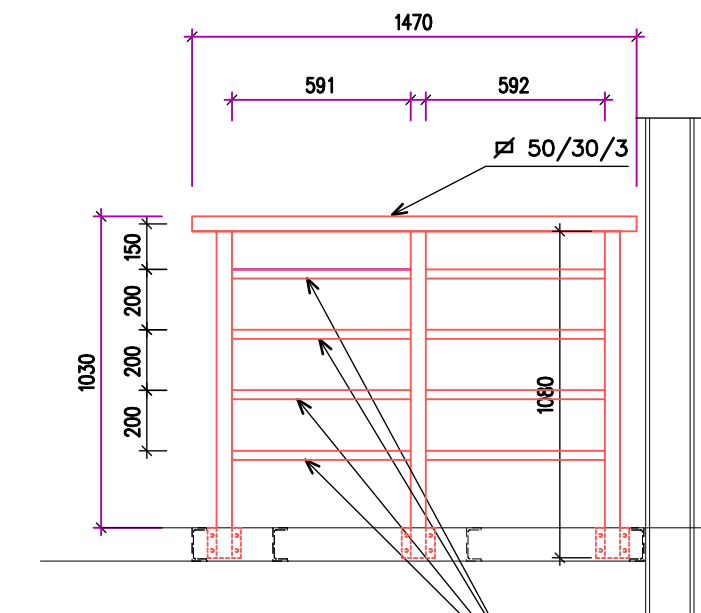
POHLED 28

šř 50/30/3 – 3460 mm  
šř 30/2,5 – 4800 mm  
P5/30/100 – 4 ks



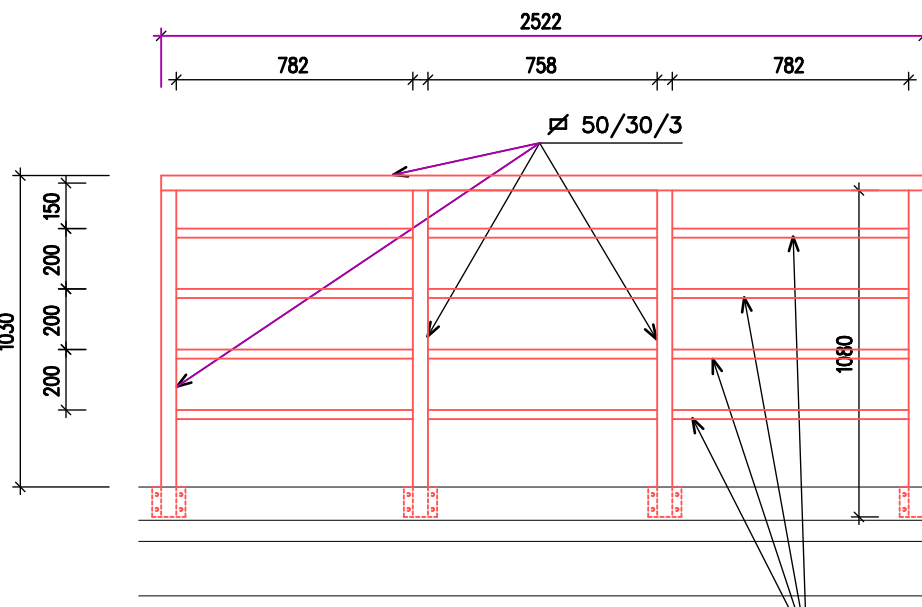
POHLED 29

šř 50/30/3 – 4710 mm  
šř 30/2,5 – 4732 mm  
P5/30/100 – 6 ks



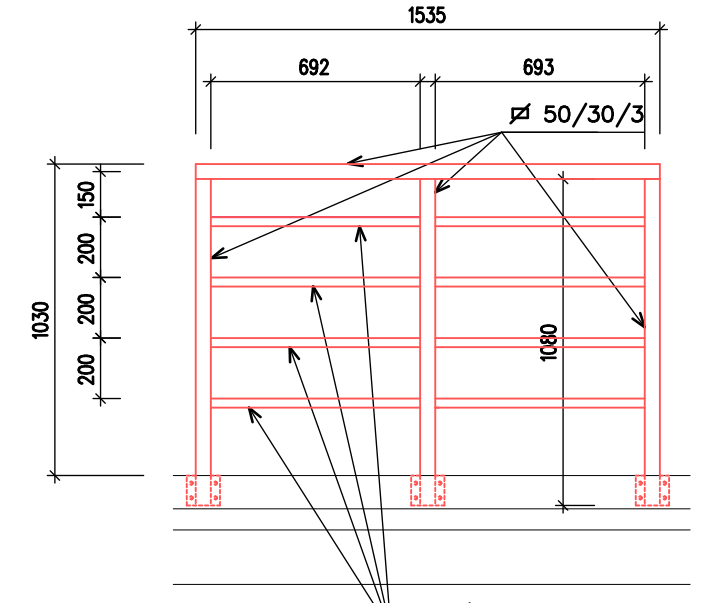
POHLED 310

šř 50/30/3 – 6840 mm  
šř 30/2,5 – 9288 mm  
P5/30/100 – 8 ks



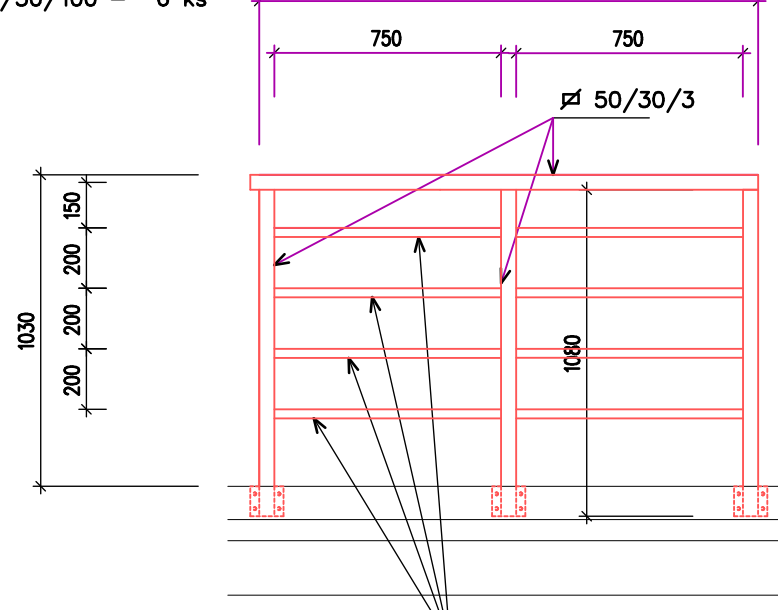
POHLED 311

šř 50/30/3 – 4775 mm  
šř 30/2,5 – 5540 mm  
P5/30/100 – 6 ks

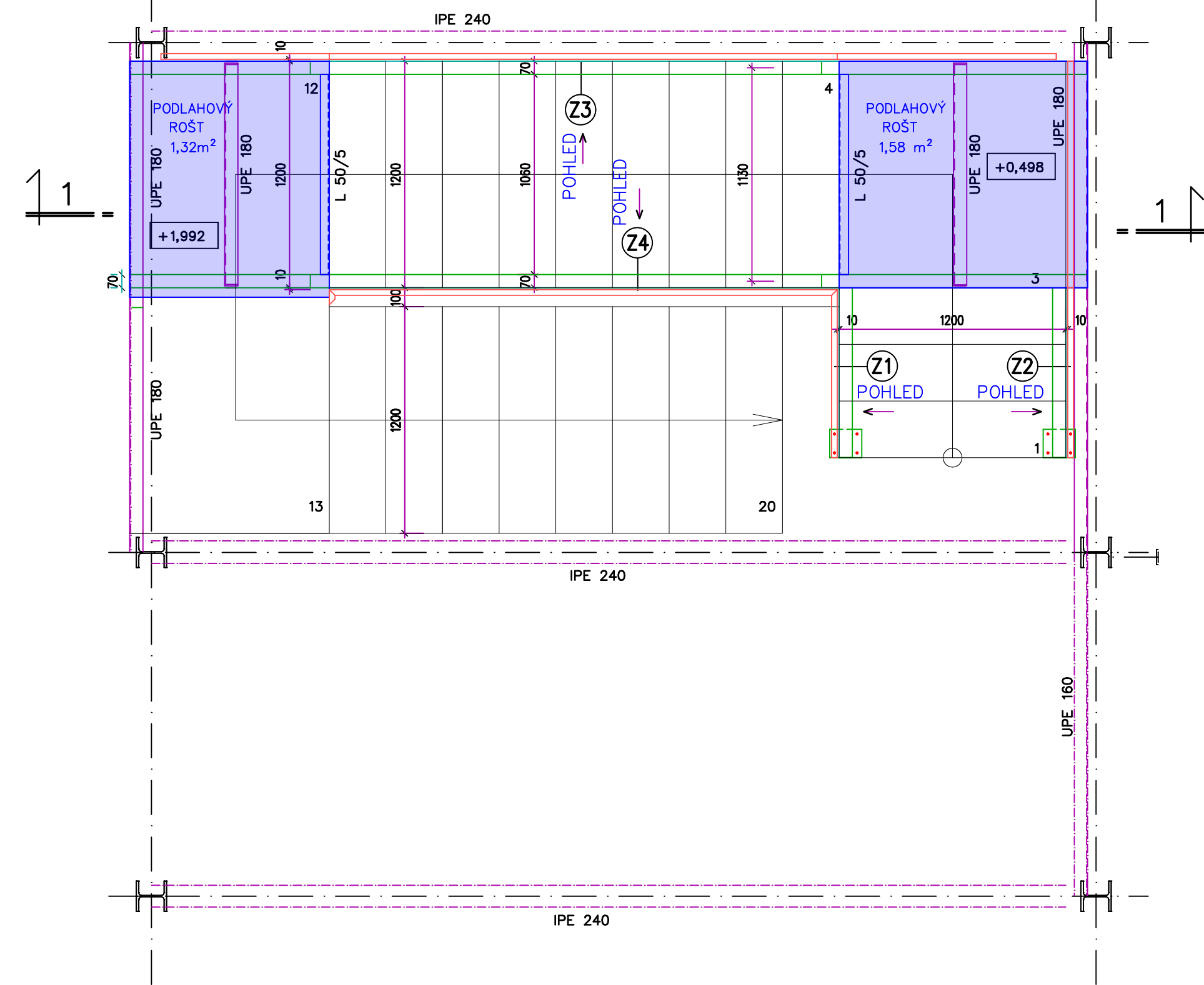


POHLED 312

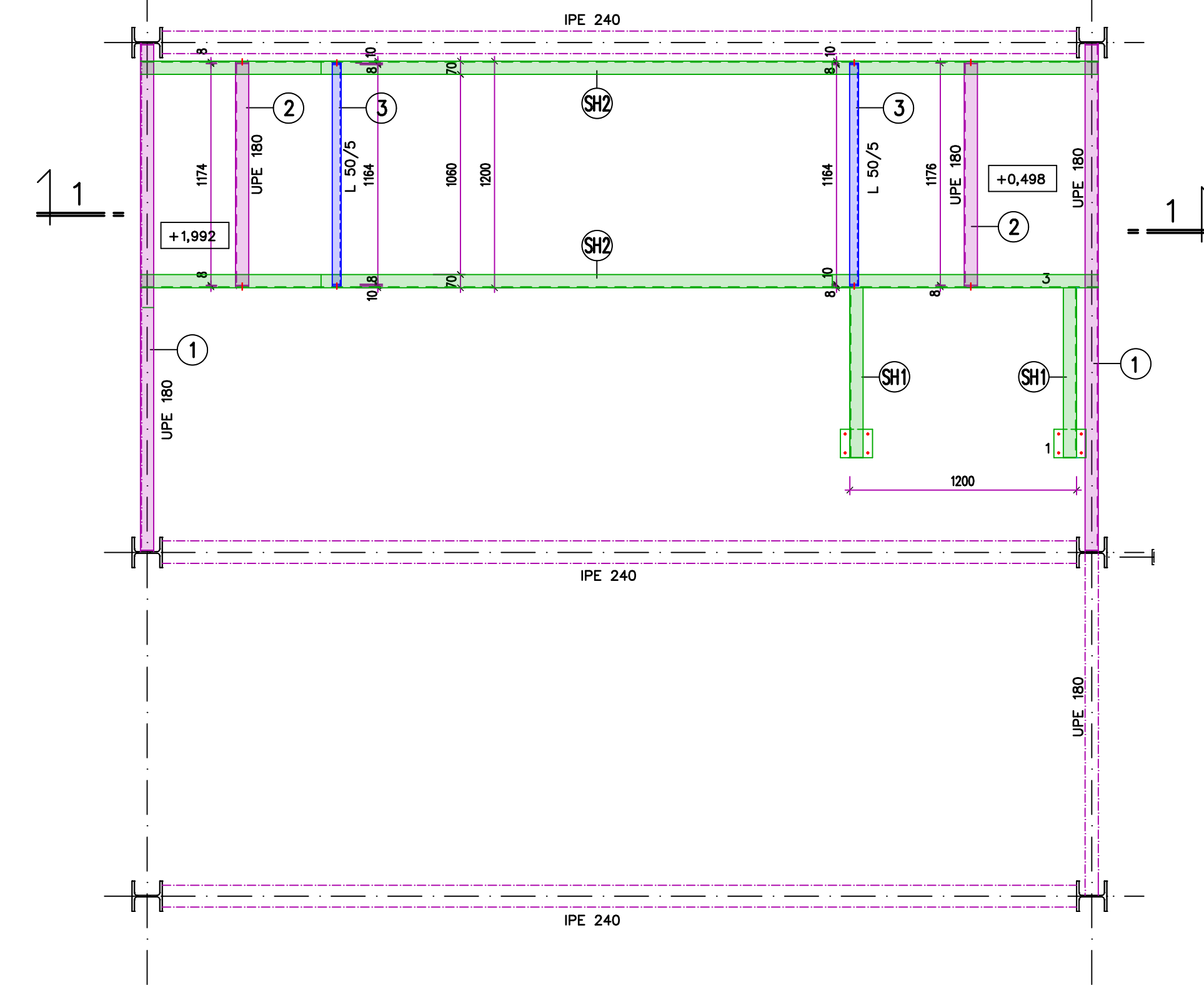
šř 50/30/3 – 4890 mm  
šř 30/2,5 – 8000 mm  
P5/30/100 – 6 ks



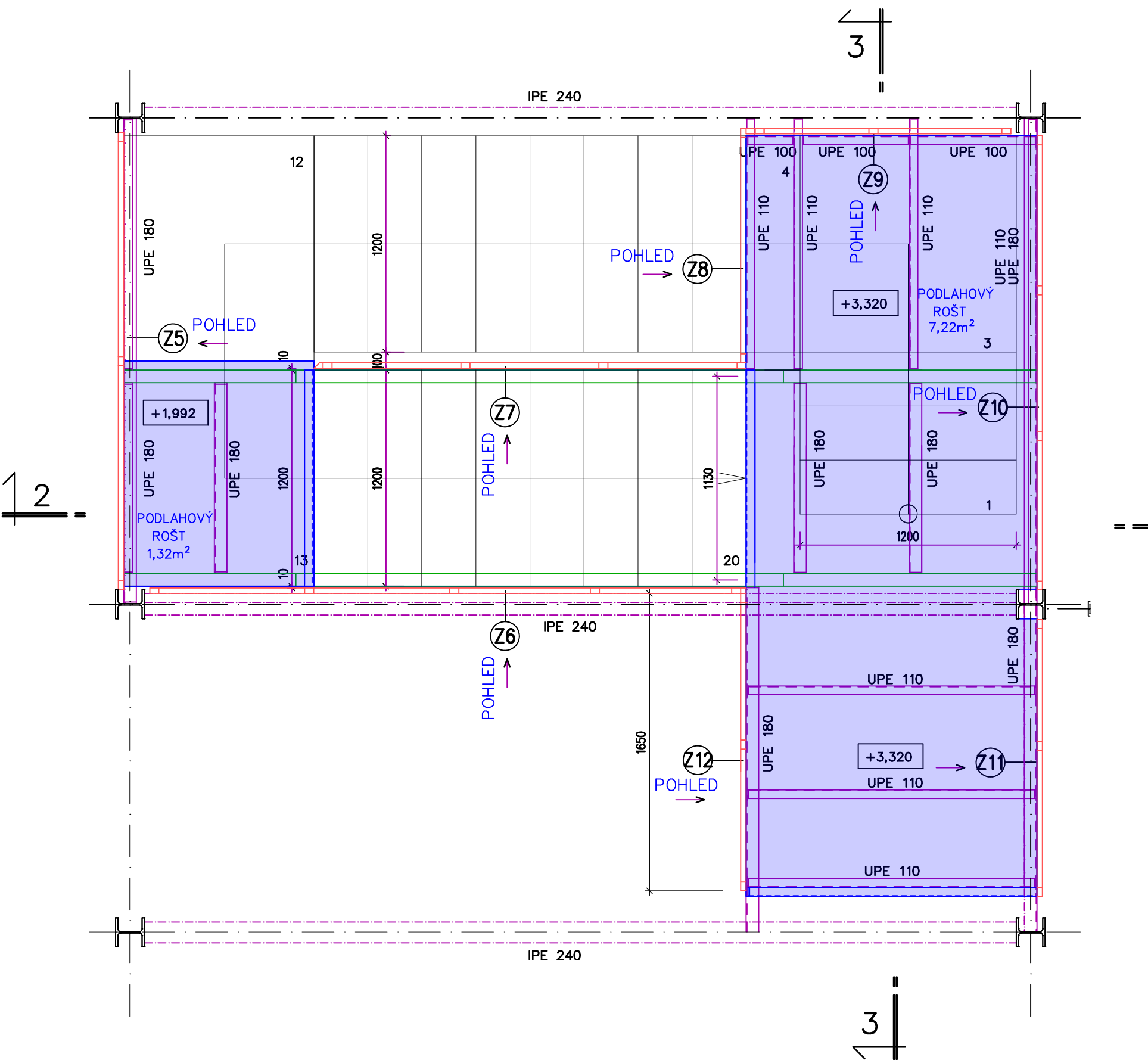
PŮDORYS SCHODŮ - NÁSTUPNÍ RAMENO + RAMENO 1



PŮDORYS SCHODNICE - NÁSTUPNÍ RAMENO + RAMENO 1



PŮDORYS SCHODŮ - VÝSTUPNÍ RAMENO



PŮDORYS SCHODNICE - VÝSTUPNÍ RAMENO

